

Syncro
Flow Orchestration Systems



Engineering that enhance
Building performance
with an eye on **sustainability**



*Solutions for a
Sustainable future*

www.SyncroSystems.co.in



Solutions to enhance
Indoor Environment
with an eye on
Sustainability

COMPANY OVERVIEW <i>Syncro - Flow Orchestration System</i>	04
RELEVANCE <i>Solutions we provide</i>	06
VALUES AND PHILOSOPHY <i>What we strive for</i>	08
EVOLVING ECOSYSTEM <i>Infrastructure</i>	10
PRODUCTS <i>Mechanical & Technological</i>	13
DIGITAL BUILDINGS <i>Bringing It All Together</i>	14
BUILDING MANAGEMENT SYSTEM (BMS)	16
PRODUCTS <i>What we Offer</i>	20
SERVICES <i>Comprehensive Overview Clientele</i>	36
SERVICE HELP DESK <i>Power of Consolidation</i>	40
CLINTELE <i>A marquee of Clients</i>	42



Company Overview

We are a leading Digital Buildings and HVAC solutions company in India with our headquarters in Bangalore.

Our Ecosystem includes Factories, R&D Labs, Sales and Service operations across the country and we are very happy to be associated with some of the most respectable facilities in the country.

Our customers include global technology leaders and consulting companies that see the value in our products and services. As part of Orient EcoSystems, Syncro has the advantage of being part of a brand that has a strong track record in delivering quality products and services for over 35 years.

Our products comply with the highest standards of quality and we are constantly evolving innovating to cater to the ever-changing world

around us. changing world around us by innovating constantly.

It is our endeavor to help our customer achieve the highest level of comfort by consuming the least amount of energy with an objective to help build a sustainable environment.

We take immense pride in collaborating with trusted global partners while still making what we can in India, to create a local ecosystem of partners and suppliers.

The combined brand of Syncro and Orient represents the spirit of success through collaboration. Our trusted partner network embodies the same values and principles that our organization does.

Our **Engineering Solutions** enable you to put a finger on the **pulse of your building!**

Partners



55%

OF BUILDING ENERGY IS CONSUMED BY HVAC SYSTEMS



40%

OF GLOBAL ENERGY CONSUMPTION IS FROM BUILDINGS

Our Solutions enhance **Indoor Environment Quality** with an eye on **Sustainability**



Relevance of the solutions we provide

For most corporations, it is important to create a safe and comfortable environment for their employees. This has a direct impact on well-being and productivity.

We provide smart solutions in

Building Management through Engineering excellence and technology enablement

We have a comprehensive array of

- Products
- Services &
- Domain expertise

to help our customers meet their objectives of comfort and efficiency for their facilities in commercial buildings and Public Infrastructure

“We do what we do”

because we believe
that Smart Solutions
in **HVAC**

- ✓ Makes your environment more comfortable
- ✓ Helps you save
 - ✓ Lots of money for your business...
 - ✓ And the **planet for your children!**



Team
Syncro



Syncro's team is its biggest asset.

The Syncro team is an amalgamation of a diverse set of skills in Technology, Finance, Projects & Services.

Our Business development teams take a consultative approach to sales by looking closely at the requirement of solution.

We believe that adding value to all involved stakeholders is our responsibility from customers and partners to our internal teams.

We
strive
to...

Make our Solutions
Better, Faster & Cheaper

INNOVATION

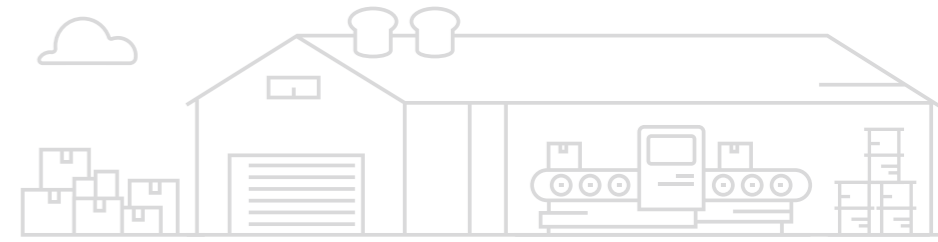
Create and deliver value to our stakeholders
including Customers, Suppliers, Partners,
Employees and the Society at large

RESPONSIBILITY

Maintain the highest standards of Quality
and Integrity in everything that we do

INTEGRITY

Get better everyday!



INFRASTRUCTURE



R&D Lab | Integration Lab | Calibration Unit

Factory Setup | Project Command Centre

MECHANICAL PRODUCTS

VAV Systems



Air Control Products



Air Distribution Products



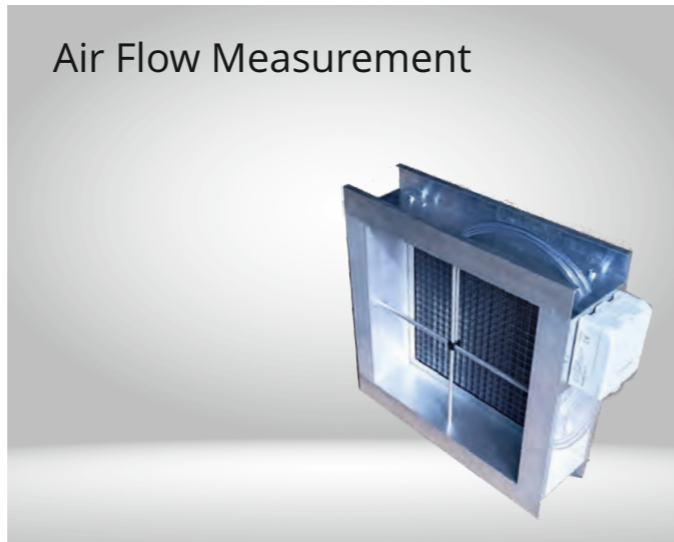
Fire Dampers



Sound Attenuators



Air Flow Measurement



TECHNOLOGY PRODUCTS

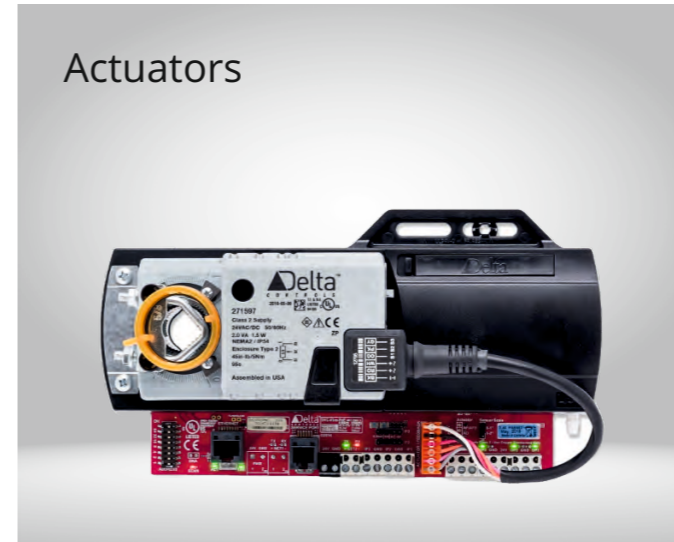
Automation Panel



Sensors



Actuators



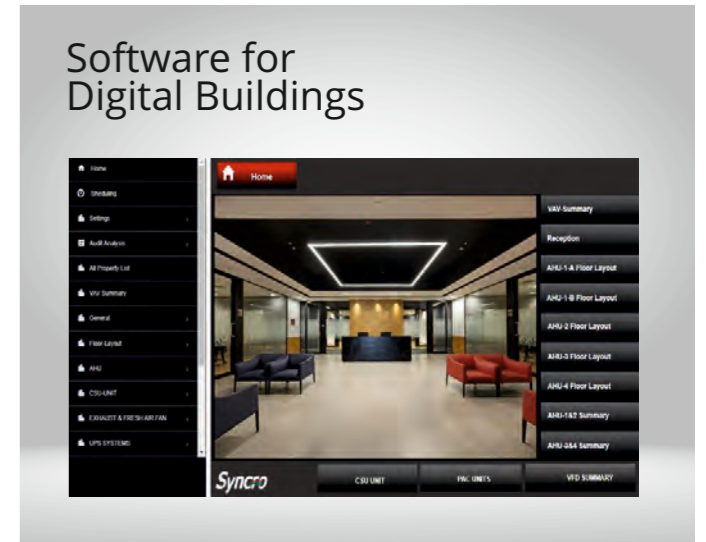
CCTV



Access Control



Software for
Digital Buildings





Modern day office facilities are not just spaces with desks. They are places to engage minds, collaborate as teams and share invaluable ideas.

Behind the scenes, these buildings are composed of a multitude of Multidisciplinary disciplinary systems : Like Ventilation, Air Conditioning, Plumbing, Electricals, Lighting Management and several others.

At Syncro, we understand that our customer's primary focus and responsibility is to ensure the safety and Security of its employees and visitors.

Once that is ensured, providing a rich environment that is conducive to

productive work is very important, and one needs to do that in the most sustainable and efficient way possible. As an organization we focus on Digital Systems that bring them all together. While comfort is of the utmost importance to enhance the productivity of occupants, there is much more to it than that....

We are mindful that there is a social and Ecological impact associated with it....

Few know that Buildings account for 40% of global Energy Consumption and the chunk of it comes from HVAC.

So focusing on the right areas makes all the difference.



The Power of bringing it all together



Plug & Play all the way

BMS Systems have traditionally been infamous for not completing on time. There are several reasons for this, and one of the major ones being that too much is being done at the site by well intentioned but under prepared engineers, that have to battle with too many site issues.

At Syncro, we have solved this with our in-house plug and play panel manufacturing and a sophisticated testing that requires engineers at the site to do the bare minimum. This has allowed us to significantly compress implementation time-lines. Some of our case studies of green field implementations and retrofits

have earned us the respect of many. The demanding project time-lines often result in disparate systems being set up that work in silos that are not integrated scientifically. This is a common problem that not only results in inadequate controls of the building but becomes a nightmare when it comes to making any enhancements or improvements.

Syncro takes a top-down approach that starts with the end result in mind and brings together systems in a synergistic way. This reduces wastage in terms of redundant and often conflicting systems.



We use BMS as an enabler to provide better engineering and not just as a fancy tool. This requires in-depth understanding of the HVAC mechanisms and other associated systems.



BMS SENSORS

With our advanced sensor technology, buildings become more efficient, comfortable, and sustainable. From optimizing energy consumption to ensuring optimal indoor air quality, our system works tirelessly to create the perfect environment.

Our comprehensive sensor suite includes temperature, humidity, CO2, light, occupancy, pressure, air quality, water quality, door/window, and fire/smoke sensors, providing granular data for precise building management.

Indoor Humidity & Temperature Transmitter



Duct Mounted Combo Temp & Rh Sensor



Weather Proof Differential Pressure Transmitter



Immersion Temperature Sensor



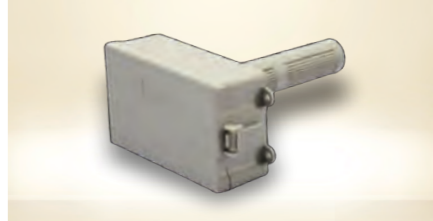
Air Differential Pressure Switch



Ambient / Outside Temperature Transmitter



Duct Mounted Temperature Sensor



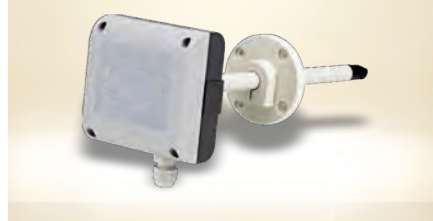
Co2 Sensor



Duct Mount Humidity & Temperature Transmitter



Air Velocity Sensor



System Benefits in a nut-shell

	<p>Speed in responding to issues</p>	<p>CIOs and Chief Execs globally rate this as the highest priority.</p>	<p>Intangible Indices vary depending on Industry</p>
<p>Enhanced Controls</p>	<p>Increased comfort and productivity for occupants</p>	<p>Cost of Human resource is the most significant cost, and enhanced productivity is very important.</p>	
	<p>Reduced effort and cost to identify and fix operational issue</p>	<p>Depending on the size of the facility, a BMS System can cut down need for floor technicians dramatically.</p>	<p>Cuts down Site HVAC Technician Manpower cost by 60%.</p>
<p>Reduced Operating Cost</p>	<p>Reduced Manpower to manage critical facility operations</p>		
	<p>Scientifically Integrated systems</p>	<p>Substandard HVAC systems are notorious for being energy guzzlers, being the biggest energy cost in all facilities. Scientifically implemented BMS systems can significantly optimize energy consumption.</p>	<p>Conservative estimates in Energy Savings 30-35% (for a scientifically implemented system)</p>
<p>Optimization and Efficiency</p>	<p>Performance oriented Systems</p>		

What to expect from Syncro's next Generation BMS System?

An Integrated Approach

Treat the HVAC system as a whole and not as a collection of sub-systems. Use standards-based, interoperable systems to allow future scaling.



Easy and Fast to implement

Highly simplified Plug & Play Automation allows Fast and Early Integration

Testing during project implementation



Smart Automation

Intelligent control Strategies for smarter downstream Integration



Contemporary User Interfaces

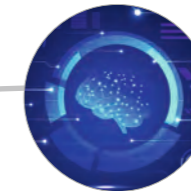
Highly customizable Graphics Touch Screen displays and Integration with Alexa **Diagnostic Capability**

Tools to identify gaps during implementation and maintenance



Integrated Building Management

Lighting Management, Access Control on the same BACNet platform



Intelligent Analytics

Allow future extensions by seamlessly integrating wireless sensors as actuators as the demand arises for them



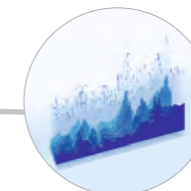
IoT and wireless devices

Energy Management and System Performance Improvements. A System that continuously evolves



Cloud based management

Centralized Management Reports and Operational Metrics



Platform for AI and ML

Syncro's Machine Learning platform presents a great opportunity for intensive data crunching to produce non-intuitive insights that make your building's performance high.



Predictive Maintenance

Use high-end algorithms to predict equipment failures and carry out preventive maintenance

Variable Air Volume (VAV)

Syncro systems VAVs... were designed based on 20+ years of delivering successful VAV systems all over India that not only meet both the fundamental objectives but its design considerations also address the various aspects and stakeholders involved through the lifecycle. The Syncro solutions takes a 360 degree approach to making things happen.

The Syncro design and implementation team has successfully installed over 250,000 VAVs in over 2500 projects all over India and has an unparalleled track record having won many awards, Industry recognition and a marquee client base.

Syncro VAV Boxes come with Delta or Belimo controllers.

Syncro VAV can be Integrated and Provide Online Network with Software Interface with the help of Integrator and Tab Software



Delta
CONTROLS



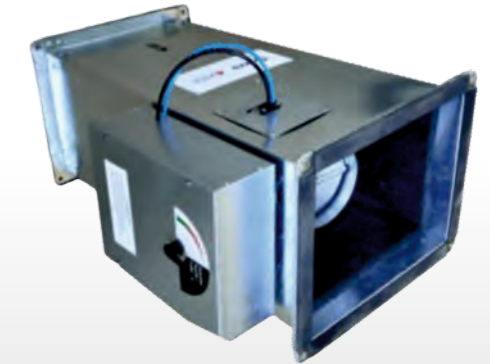
BELIMO



Standard VAV



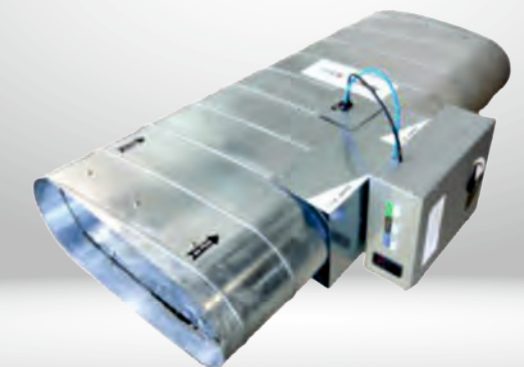
Rectangular Ducted VAV



Circular VAV



Elliptical VAV



VAV Integrator & Software











Powder coated VAV.



Air Control Products

Synco Industries are manufacturers for major Air control products in the HVAC Industry.

		SY-VCD Volume Control Damper	
SY-RVCD Round - Butterfly Damper		SY-SAT Sound Attenuator	
SY-45: Fan Silencers		SY-Grill Box: Plenum Boxes	
SY-FD: Fire Damper		SY-RD: Radial Damper	
SY-FAN-CAB: Fan Cabinets		SY-MB: Mixing Boxes	

Air Distribution Products

Synco Industries are Manufacturers for Air Distribution Products with in-house Powder Coating facilities..

SY-GR : Linear Grills		SY-SAD/RAD 4 Way Square Diffusers	
SY-OBD : Collar Damper		SY-RD: Disc Value	
SY-RD : Round Diffuser		SY-OBD- Diffuser: Collar Damper	
SY-DDG : Double Deflection Grill		SY-AI VCD	
SY-FAL: Fresh Air Louvers		SY-EBD: Eye Ball Diffusers	
SY-Plaque Diffuser 4-Way Square Diffuser		SY-Jet Diffuser	
SY-DL: Door Louvers		SY-CGR : Elliptical curved Grill	

Fire Dampers

Your first line of defense against fire

Syncro Industries are manufacturers of **Fire Dampers in the HVAC Industry**

Syncro Fire Dampers are **CBRI 120 Minutes Fire Rated and Certified Dampers.**



Types of Fire Dampers

Fusible Link Fire Dampers
UL Listed Fusible Link

Motorized Fire Dampers

Fire Dampers with Sleeve and Flange options are available

Control Panel, Actuators For MFD are available.

Actuator partner:
Honeywell & Belimo.

Motorized Fire Dampers



Fire Damper Actuators



Fusible Link Fire Dampers



Fusible Link



Sound Attenuators

Quiet places significantly enhance the experience of the environment, be it in a work space, a basement with high sound exhaust fans, or an underground metro station.

Apart from contributing to a pleasant experience, there is often times, like in the case of underground metro stations, a safety necessary in order to ensure that Emergency Public Announcements are not drowned in the noise of the HVAC systems.

Quiet Work Environment

Syncro has a wide range of Sound attenuators manufactured at the factory with international collaborations for design and testing.

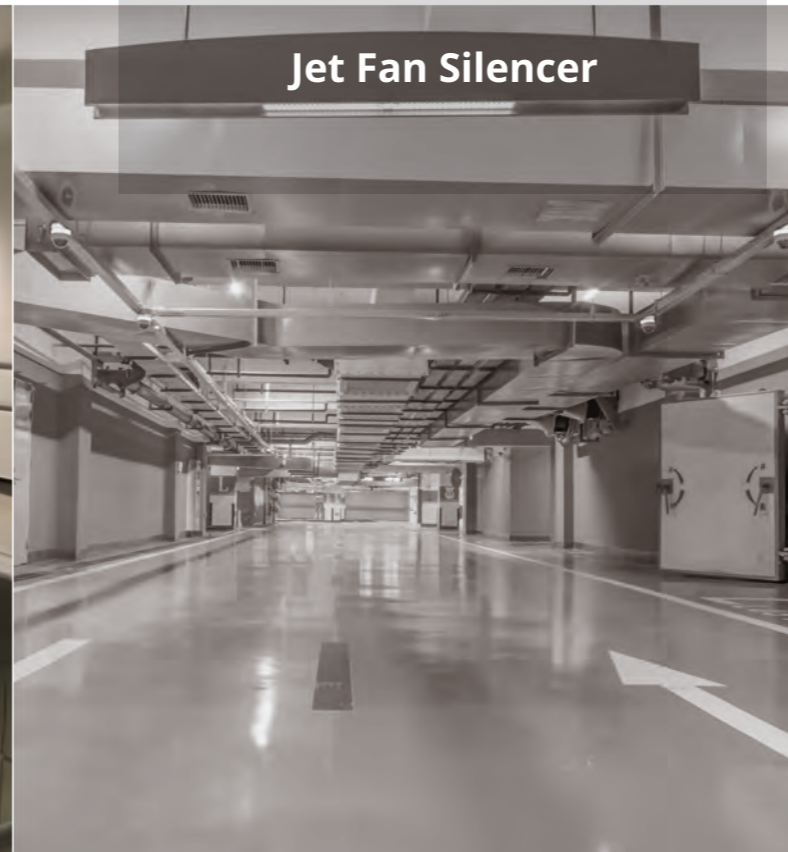
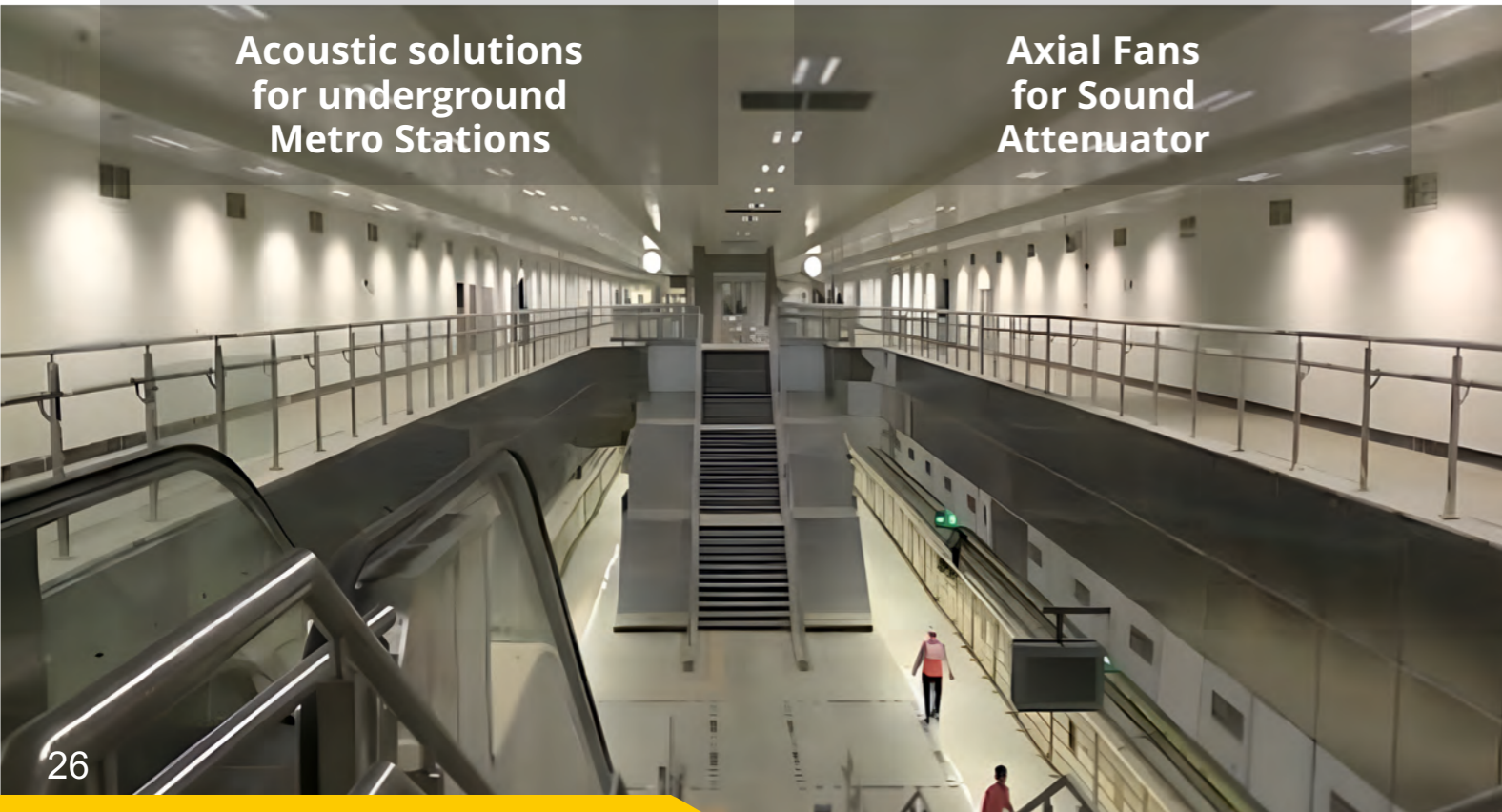


Acoustic solutions for underground Metro Stations

Axial Fans for Sound Attenuator

Jet Fan Silencer

Indoor HVAC Attenuator



ELV Safety & Security Solutions

At Syncro, we're committed to delivering top-tier integrated solutions that combine the best of ELV and ICT technology. By partnering with industry-leading brands, we offer a wide range of high-quality services, including Fire Alarm & Public-Address Systems, AV Solutions, CCTV & Security Systems, Structured Cabling & ICT Networking.

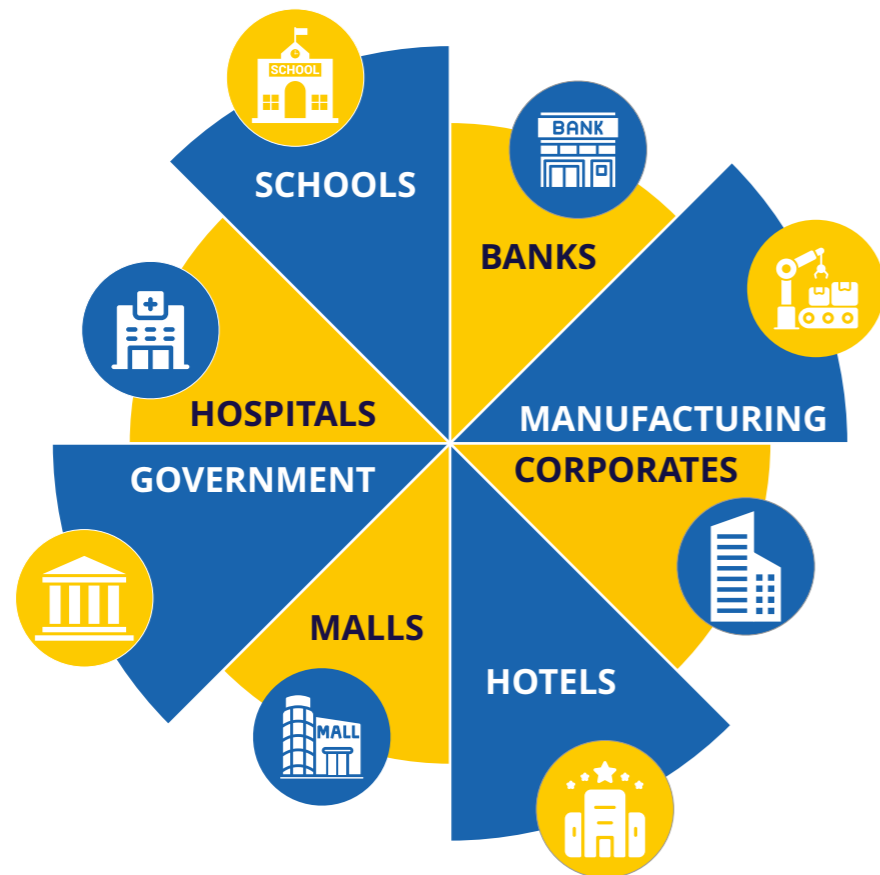
We're dedicated to helping you realize the full potential of smart buildings. Our innovative ELV solutions are designed to enhance efficiency, improve reliability, future-proof your investments, and extend asset lifespan.

We understand that every building has unique requirements. That's why we offer customized ELV solutions that maximize energy efficiency, protect the environment, and deliver exceptional value.

Our expertise extends across a wide range of industries, including Commercial Buildings, Industrial Facilities, Pharmaceutical Companies, Healthcare Institutions, and Infrastructure Projects.

By partnering with Syncro, you're choosing a trusted provider committed to delivering innovative, sustainable, and value-driven ELV solutions.

Our wide range of solutions & trust spans across industries



ELV Safety & Security Solutions

Networking Solutions

Discover how our Extra Low Voltage (ELV) systems provide the essential infrastructure for your network to function smoothly and efficiently. We tailor ELV Solutions for Your Networking Needs which include:



Structured cabling system: our Structured cabling systems are designed to be easily modified and expanded to accommodate changing network needs. They can support a wide range of network applications and devices, from simple LANs to complex enterprise networks. It can help reduce long-term costs by simplifying network management and maintenance.

ICT Networking: Syncro's ICT networking solutions provide seamless connectivity between various systems within the ELV section, improving efficiency and productivity. Our Key ICT Networking Components comprises of

- **Network switches** that connect multiple network devices and manage data traffic, optimizing network performance.
- **Routers** enable communication between different networks, allowing for efficient data exchange and network segmentation.
- **Wireless Access Points (WAP)** provide wireless connectivity, enabling users to access the network from various locations within the building.
- **Network Security Devices** such as Firewalls, intrusion detection systems, and other security measures protect the network from unauthorized access and cyber threats.

AV System: we have AV solutions tailored to meet your unique needs and preferences, from small meeting rooms to large auditoriums, we have the perfect fit. Our AV system seamlessly integrates with your ELV infrastructure. Our key features are:

- **Audio:** Crystal-clear sound for presentations, music, and voice communication.
- **Video:** Stunning visuals on large displays for immersive presentation and Seamless video conferencing for remote collaboration.
- **Control:** Easy-to-use interfaces for effortless control of all AV components and centralized management for efficient operation.

Security System

Our ELV security systems offer advanced protection without the high voltage risks associated with traditional systems. They are designed to be energy-efficient, cost-effective, and versatile, making them ideal for various applications, from residential homes to large commercial spaces.



Key Components of our ELV Security Systems

Access Control:

- **Biometric Systems:** Fingerprint, facial recognition, or iris scanning for secure access.
- **Card Readers:** Proximity cards, magnetic stripe cards, or RFID cards for convenient access control.
- **Intercom Systems:** Two-way communication for enhanced security and convenience.

Surveillance Systems:

- **CCTV Cameras:** High-definition cameras for indoor and outdoor surveillance.
- **Video Analytics:** Intelligent software to detect and analyze events in real-time.
- **Remote Monitoring:** Access footage from anywhere with an internet connection.

Alarm Systems:

- **Intrusion Detection:** Sensors to detect unauthorized entry.
- **Fire and Smoke Detection:** Early warning systems to protect against fire hazards.
- **Emergency Alert Systems:** Immediate notification of emergencies.

Visitor Management Systems:

- **Registration and Tracking:** Visitors can be registered upon arrival, providing essential information such as name, contact details, and purpose of visit.
- **Access Control:** Visitors can be granted access to specific areas of the facility based on their authorization level.
- **Notification and Alerts:** Automated notifications can be sent to relevant personnel when visitors arrive or depart.
- **Reporting and Analytics:** Detailed reports can be generated to track visitor patterns and identify potential security risks.

Parking Management Systems:

- **Space Allocation:** Available parking spaces can be monitored and allocated to visitors or staff.
- **Access Control:** Parking gates can be controlled to restrict entry and exit.
- **Payment Processing:** Fees for parking can be collected automatically using various payment methods.
- **Violation Monitoring:** Unauthorized parking or overstaying can be detected and addressed.

ELV Safety & Security Solutions

Our advanced ELV Security System protects your property, assets, and loved ones with advanced security measures. They are cost-effective with Lower installation and maintenance costs compared to traditional security systems. And reduce your carbon footprint and energy bills.

At Syncro, we offer a wide range of ELV security solutions tailored to your specific requirements. Our experts will work with you to design a customized system that meets your security needs and budget.

Life safety System

Life safety systems are essential components of any modern building, providing critical protection in emergencies. Our Life Safety systems include fire alarm systems, public address systems, background music systems, and emergency lighting systems.



Fire Alarm Systems

- **Early Detection:** Detect fires in their early stages, giving occupants precious time to evacuate or take appropriate action.
- **Notification:** Sound alarms, voice announcements, and visual alerts to warn occupants of a fire.
- **Integration:** Connect with other building systems, such as elevators and HVAC, to facilitate safe evacuation.

Public Address Systems

- **Clear Communication:** Provide clear and intelligible announcements during emergencies or routine operations.
- **Evacuation Guidance:** Guide occupants to safe exit points.

BGM (Background Music) Systems

- **Ambiance Enhancement:** Create a comfortable and inviting atmosphere in various settings.
- **Noise Masking:** Reduce ambient noise and improve sound quality.
- **Branding and Marketing:** Promote products or services through targeted music selections.

Emergency Lighting Systems

- **Backup Illumination:** Provide reliable lighting during power outages or emergencies.
- **Way-finding:** Guide occupants to safe exit points

Our Comprehensive Services

With Syncro's comprehensive service offerings, you can count on expert maintenance, repair, and inspection for all your ELV safety and security needs. Our goal is to maximize the reliability and efficiency of your systems.



Maintenance

- **Regular Inspections:** Routine inspections to identify potential issues and address them proactively.
- **Preventive Maintenance:** Scheduled maintenance tasks to prevent breakdowns and prolong the lifespan of your equipment.
- **Software Updates:** Keep your systems up-to-date with the latest software patches and security updates.
- **Performance Testing:** Regular testing to ensure that your systems are functioning as intended.

Inspection

- **Compliance Audits:** Verify that your systems meet local building codes and regulations.
- **Risk Assessments:** Identify potential security vulnerabilities and develop mitigation strategies.
- **Energy Efficiency Audits:** Evaluate the energy efficiency of your ELV systems and recommend improvements.

Repair

- **Rapid Response:** Quick turnaround times for repairs to minimize downtime.
- **Qualified Technicians:** Our technicians have the expertise and experience to diagnose and repair a wide range of ELV systems.
- **Genuine Parts:** We use only high-quality, genuine parts to ensure optimal performance and reliability

Warranty Support: Benefit from our warranty coverage for eligible repairs.

Our commitment to excellence means that you can rely on us for reliable maintenance, timely repairs, and thorough inspections.

Orient Eco Systems

Syncro is proud to be the part of Orient Ecosystems PVT.LTD. group. With a shared commitment to source, implement and enhance the state-of-art engineering technology and to touch lives and add value for better living.

Orient EcoSystems brings together the best of the breed global brands that share our values and are recognized by their commitment to quality. These partnerships allow us to bring in the best practices from across the world. In today's evolving setup of ever-changing and complex needs of modern buildings, we are ready to provide just the right, simplified, & most sustainable engineering solution to every need.

GREENHECK
Building Value in Air.

- Building & Basement Ventilation Fans
- Fire/Smoke Damper UL555 & UL555S
- Kitchen Ventilation
- Lab Exhaust System



Danfoss

- PIBCV
- Energy Valves
- VFD
- Manual Balancing Valves & Control Valves
- Heat Exchangers



ORIENT

- Grooved Couplings & Fittings
- Flexible Fire Hoses & Sprinklers
- HVLS



fischer
innovative solutions

- Channels
- Clamps (Pipe, Sprinkler Beam Etc.)
- Anchors
- Fire Stop
- Flat-roof System
- Wire Support




DAIKIN

- Chillers
- Heat Pumps
- FCU



ADVANCE VALVES

- Motorised Butterfly Valves
- Butterfly Valves
- Check Valves
- Balancing Valves



xylem
Let's Solve Water

- Pumps
- BTU Meters
- Expansion Tanks
- Air Separator
- Plate-type Heat Exchanger
- Condition Monitoring



RUBINETTERIE BRESCIANE

- Pressure Reducing Valve
- Ball Valve
- Non Return Valve
- Air Release Valve



Johnson Controls

- On/Off & Modulating Valve
- Thermostat
- Motorized Butterfly valve
- FCU Valve Stations




THERMOBREAK
Thermal Insulation

- Thermal & Acoustic Insulation
- Tube Insulation
- No Clad External Insulation




Baumer

- Pressure Gauges
- Temperature Gauges
- DP Transmitter
- CO2 Sensor
- Magnehelic Gauge




Easyflex[®]

- Rubber Bellows
- Cushy Footmount
- Spring isolators



SI CONTROLS

- Strainers



Our HVAC and BMS solutions deliver superior indoor comfort while optimizing energy consumption. From installation and maintenance to advanced system integration, we provide tailored services to meet your specific needs.
(Service list follows)

Building Management

- Cost Savings
- Enhanced Efficiency
- Sustainability
- Regulatory Compliance
- Real-Time Energy Data
- Detailed Analytics
- Customizable Dashboards
- Automated Alerts
- Energy Reports
- Tailored Solutions
- Dedicated Support
- Expertise & Innovation



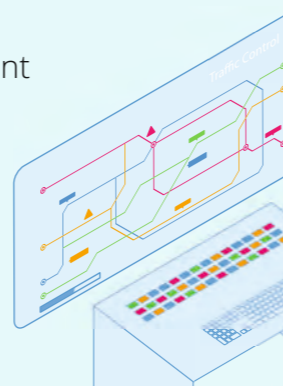
HVAC Maintenance

- AMC/Preventive Maintenance
- Expert Repairs
- Energy Efficiency
- Seasonal Tune-Ups
- Filter Replacements
- System Cleaning Calibration
- Safety Checks



Monitoring Solution

- AMC
- Comprehensive Oversight
- All-in-One Platform
- Real-Time Insights
- Automated Processes
- Scalability
- Intuitive Dashboard
- Maintenance Management
- Financial Management
- Custom Reporting
- Maintenance & Repairs
- Regulatory Compliance
- Operational Efficiency



Indoor Air Quality

- Healthier Living Spaces
- Enhanced Comfort
- Energy Efficiency
- Air Purification Systems
- Ventilation Solutions
- Humidity Control
- Indoor Air Quality Testing
- Maintenance & Support
- Expertise & Experience
- Customized Solutions



Electronic Air Balancing

- Advanced Measurement
- System Adjustment
- Detailed Reporting
- Calibration and Optimization
- Recommendations advisory
- State-of-the-Art Technology
- Commitment to Excellence

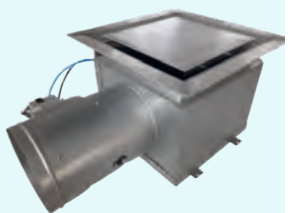


Retrofit For Variable Load

- System Assessment
- Custom Solutions
- Installation and Integration
- Performance Testing
- Innovative Solutions

VAV

- VAV System Installation
- System Design and Consultation
- Routine Maintenance
- Repairs and Troubleshooting
- System Upgrades
- Retro
- Customized Solutions
- Customer Satisfaction

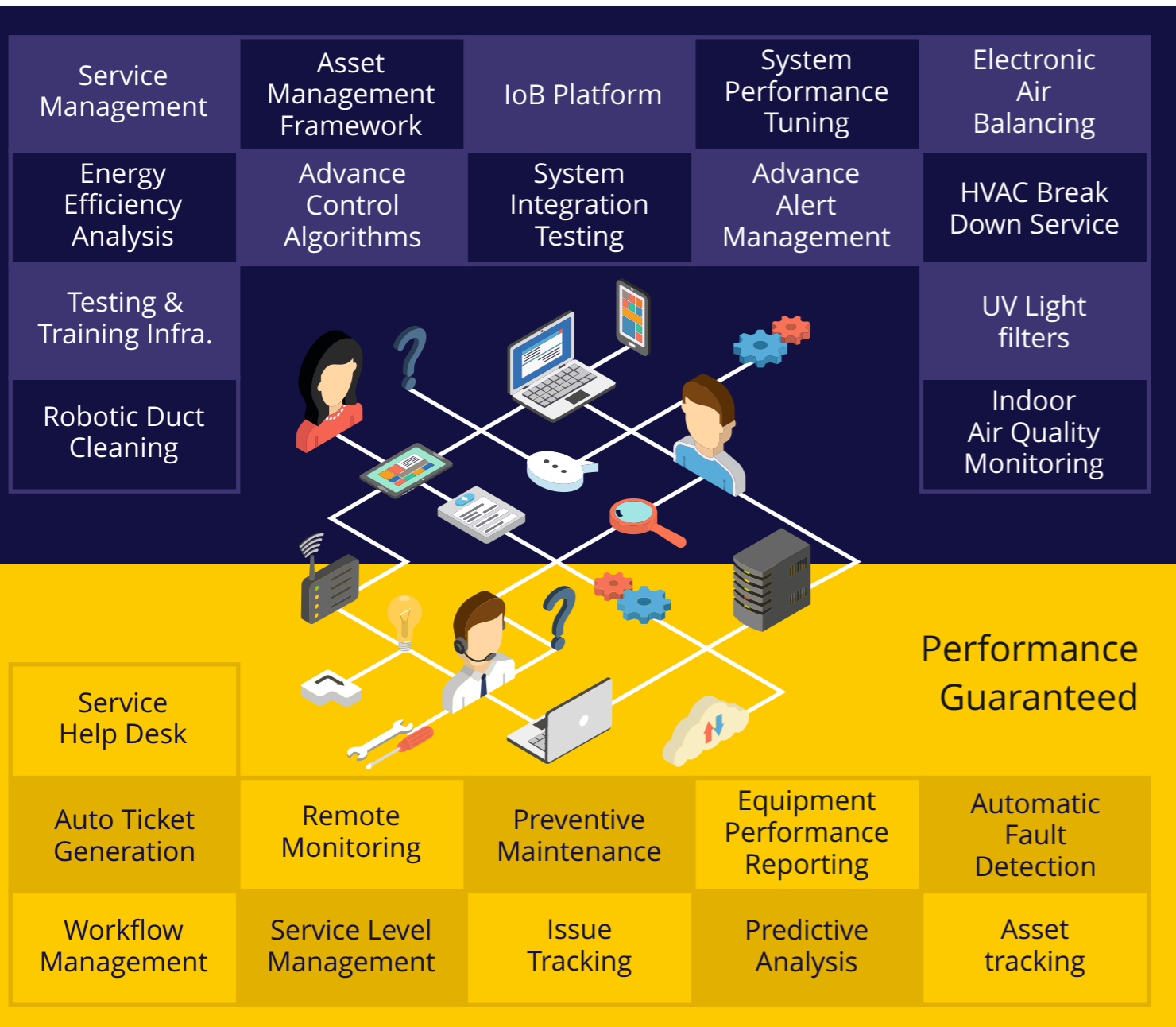


Duct Cleaning

- Improve Air Quality
- Increase HVAC Efficiency
- Reduce Allergens
- Odour Removal
- High-Performance Equipment
- Detailed Cleaning
- Customer-Centric Approach
- Expert Technicians



Syncro offers comprehensive integrated maintenance services to ensure fault-free operation and optimal performance.
 State-of-Art, Technology-powered Service Framework Management



Integrated Work Flow Management for high efficiency and customer satisfaction

IAQ Audit Service



Syncro's Indoor Air Quality Audits Service is an important assurance offering to Facility Managers, Owners and Occupants that want a Healthy and Hygienic work Environment

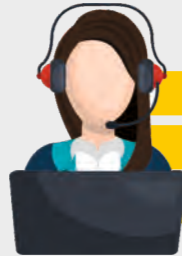
- No Capital Investment required
- Periodic Assessment
- Centralized Cloud based access
- Multiple Facilities Overview
- Advisory services for remediation



Temperature 27°C	Humidity 60.8%	Carbon dioxide 429 PPM	IAQ Index 122.0
TVOC 422PPM	PM 2.5 40µg/m3	PM 10 42µg/m3	

Service Help Desk

- ✓ Breakdown support
- ✓ Preventive Maintenance
- ✓ Managed Services



1-800-572-9844
service@syncrosystems.co.in
www.syncrosystems.co.in



Proven Track Record



Marquee Customer base



Authorized OEM Partner



Scientific Approach to Service Delivery



Large pool of technical expertise



Asset Management



Data Capture & Analysis



Sophisticated Diagnostic Tools



Continuous Improvement



Mult-Level support structure



Pan India Presence

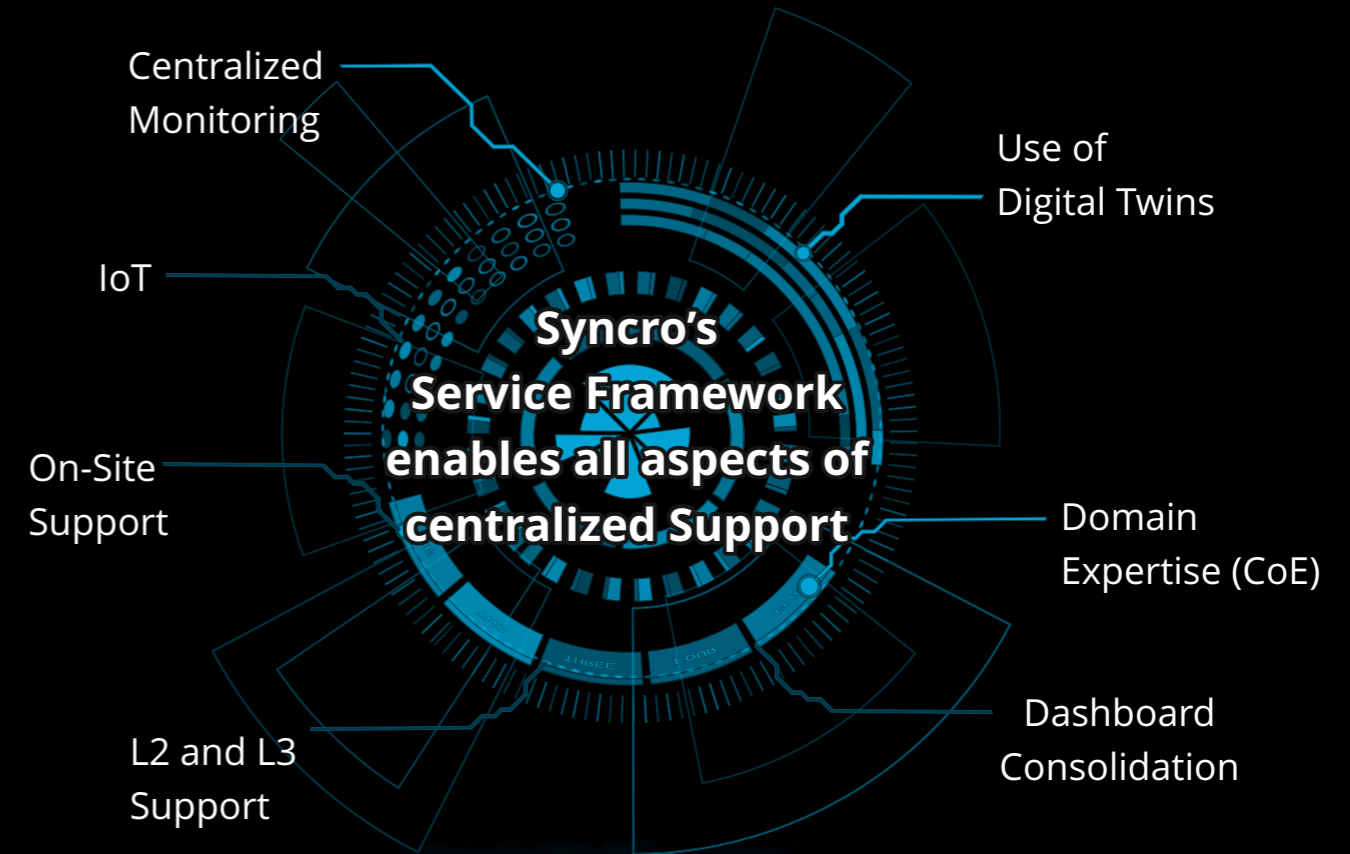


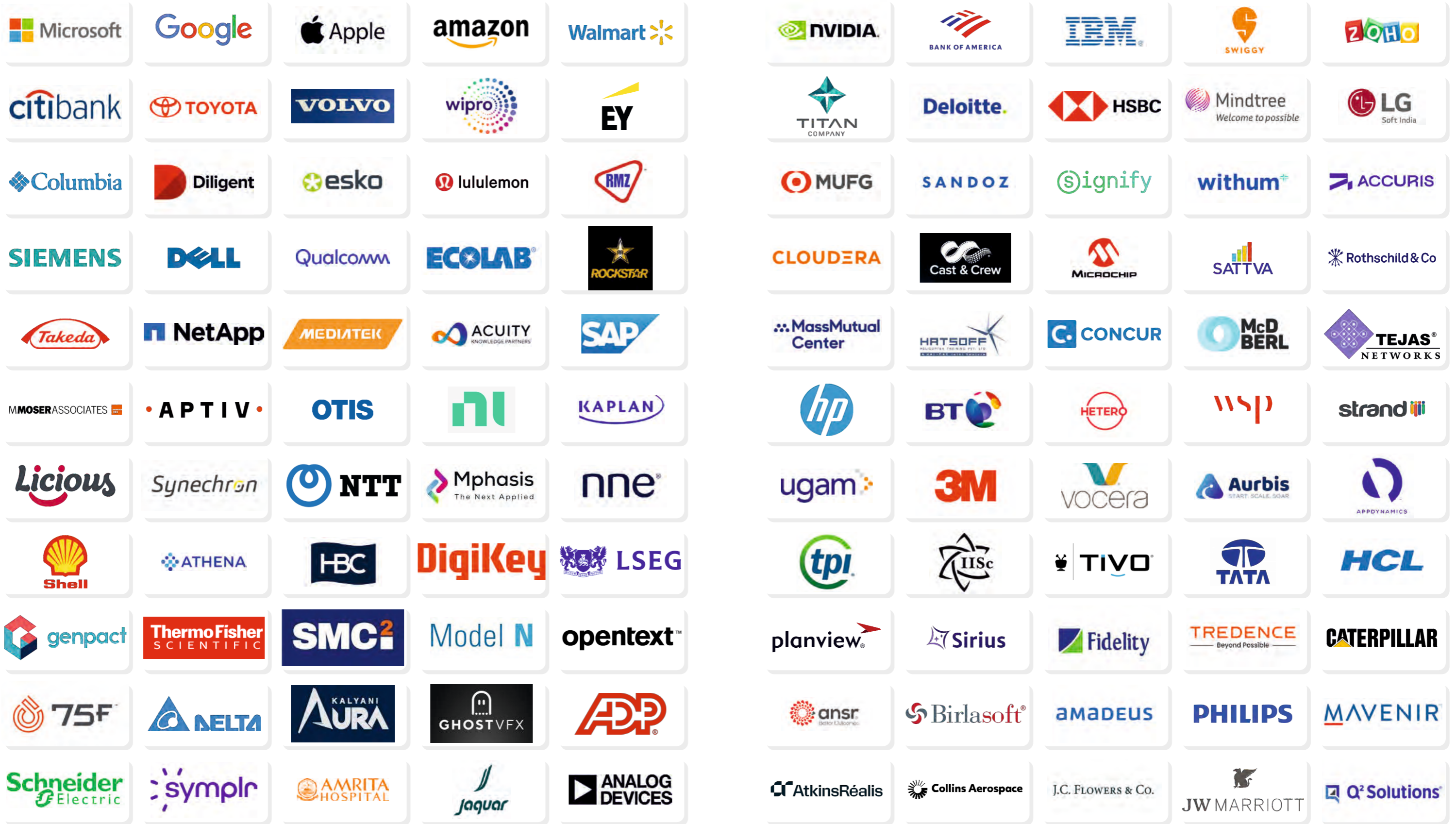
Service Command Centre



Centralised Operations Support

Experience the power of Consolidation








Engineering to that enhances
Building performance
with an eye on **sustainability**



P: 1-800-572-9844
E: helpdesk@syncrosystems.co.in
E: sales@syncrosystems.co.in
W: www.syncrosystems.co.in



Our Engineering Solutions enable
you to put a finger on the pulse
of your building!

